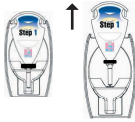


**Procedure Card for Accutest® IDenta
Cocaine/Crack Identification Field Test Kit Step 1 – Detection
(Catalog No. ACS1000)**

Read this procedure card prior to use.

INSTRUCTIONS

- A. Remove sampler from the top of the Accutest® IDenta Step 1 test unit.



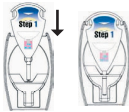
- B. Slide rubber ring off sampler and discard.



- C. Press sampler's adhesive tip onto suspected substance, allowing some material to stick to tip.



- D. Return sampler to the test unit and press firmly to lock.



Warning:

Do not continue to the next step until sampler is completely locked into place.

- E. With **thumb and forefinger**, firmly press Chamber 1 until ampoule breaks.



- F. Gently shake test unit for 2 – 3 seconds.



- G. If the particles adhering to the sampler tip turn a turquoise color, cocaine may be present.



Note: Color may fade in a few minutes.

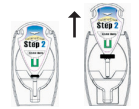
Proceed to cocaine confirmation. This will require the use of Accutest® IDenta Cocaine/Crack Confirmation Kit Step 2 (Cat. No. ACS1100)

**Procedure Card for Accutest® IDenta
Cocaine/Crack Confirmation Field Test Kit Step 2
(Catalog No. ACS1100)**

Read this procedure card prior to use.

INSTRUCTIONS

- A. Remove sampler from the top of the Accutest® IDenta Step 2 test unit.



- B. Slide rubber ring off sampler and discard.



- C. Press sampler's adhesive tip onto suspected substance, allowing only a few particles to stick to **the surface of the tip**.



- D. Return sampler to the test unit and press firmly to lock.



Warning:

Do not continue to the next step until sampler is completely locked into place.

- E. With **thumb and forefinger**, firmly press Chamber 1 until ampoule breaks.



- F. Gently shake test unit for 2-3 seconds.



CRACK CONFIRMATION

*For cocaine confirmation skip to steps H-K

G. If the liquid in the window turns green (light or dark color), the presence of crack (cocaine base) is confirmed.



COCAINE CONFIRMATION

H. With **thumb and forefinger**, firmly press Chamber 1 until ampoule breaks.



I. With **thumb and forefinger**, firmly press Chamber 2 until ampoule breaks.



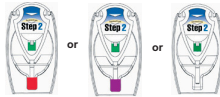
J. Gently shake test unit for 2-3 seconds.



K. If the lower phase of the window turns green (light or dark), the presence of cocaine is confirmed.



L. If a red, purple, other color or no color develops in the window, neither cocaine nor crack is present.



Note: Compare all colors in the window with the “ColorCheck” sticker.



Important: As a precaution, gloves should be worn when handling drug substances and using test units. Eye protection should also be worn. First Aid Measures: In case of contact, immediately flush eyes or skin for at least 15 minutes, while removing contaminated clothing and shoes. CALL A PHYSICIAN IMMEDIATELY. If ingested, CALL A PHYSICIAN IMMEDIATELY. Review appropriate Material Safety Data Sheet (MSDS) for toxicity and first aid information. Material Safety Data Sheets (MSDS) are available upon request at the following 24 hour phone #: (800) 424-9300 (North America), (703) 527-3887 (International). Accutest Identia is a highly accurate screening test designed for on site testing of suspected illegal drugs. As with all field testing devices, this test is not meant to replace standard practices or procedures established or recommended by local, state or federal correctional or law enforcement agencies for the identification of suspicious substances and/or illegal drugs.

TESTCOUNTRY.COM
Making Life Easier

TESTCOUNTRY
9520 Chesapeake Ave, #601, San Diego, CA 92123
800.656.0745 www.testcountry.com

STEP 2 - SIDE 2

P0337A-1

If no color develops:

H. Use **thumb and forefinger** to firmly press Chamber 2 until ampoule breaks.



I. Gently shake test unit for 1 second.



J. If the particles adhering to the sampler tip turn a turquoise color, crack (cocaine base) may be present.



Note: Color may fade within a few minutes.

Proceed to crack confirmation. This will require the use of Accutest® IDenta Cocaine/Crack Confirmation Kit Step 2 (Cat No. ACS1100).

K. If turquoise color does NOT develop, cocaine or crack is NOT present, and confirmation is not required.



Note: Compare all colors in the window with the “ColorCheck” sticker.



Important: As a precaution, gloves should be worn when handling drug substances and using test units. Eye protection should also be worn. First Aid Measures: In case of contact, immediately flush eyes or skin for at least 15 minutes, while removing contaminated clothing and shoes. CALL A PHYSICIAN IMMEDIATELY. If ingested, CALL A PHYSICIAN IMMEDIATELY. Review appropriate Material Safety Data Sheet (MSDS) for toxicity and first aid information. Material Safety Data Sheets (MSDS) are available upon request at the following 24 hour phone #: (800) 424-9300 (North America), (703) 527-3887 (International). Accutest Identia is a highly accurate screening test designed for on site testing of suspected illegal drugs. As with all field testing devices, this test is not meant to replace standard practices or procedures established or recommended by local, state or federal correctional or law enforcement agencies for the identification of suspicious substances and/or illegal drugs.

TESTCOUNTRY.COM
Making Life Easier

TESTCOUNTRY
9520 Chesapeake Ave, #601, San Diego, CA 92123
800.656.0745 www.testcountry.com

STEP 1 - SIDE 2

P0337A-1