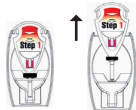


**Procedure Card for Accutest® IDenta
Heroin Identification Field Test Kit Step 1 – Detection
(Catalog No. ACS2000)**

Read this procedure card prior to use.

INSTRUCTIONS

- A. Remove sampler from the top of the Accutest® IDenta Step 1 test unit.



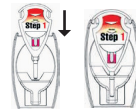
- B. Slide rubber ring off sampler and discard.



- C. Press sampler's adhesive tip onto suspected substance, allowing some material to stick to tip.



- D. Return sampler to the test unit and press firmly to lock.



Warning:

Do not continue to the next step until sampler is completely locked into place.

- E. With **thumb and forefinger**, firmly press Chamber 1 until ampoule breaks.



- F. Gently shake test unit for 2 – 3 seconds.



- G. A red-violet coloring indicates the possible presence of heroin street drug. Proceed to confirmation. This will require the use of Accutest® IDenta Heroin Confirmation Kit Step 2 (Cat. No. ACS2200).



**Procedure Card for Accutest® IDenta
Heroin Confirmation Field Test Kit Step 2
(Catalog No. ACS2200)**

Read this procedure card prior to use.

INSTRUCTIONS

- A. Remove sampler from the top of the Accutest® IDenta Step 2 test unit.



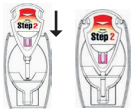
- B. Slide rubber ring off sampler and discard.



- C. Press sampler's adhesive tip onto suspected substance, allowing some material to stick to tip.



- D. Return sampler to the test unit and press firmly to lock.



Warning:

Do not continue to the next step until sampler is completely locked into place.

- E. With **thumb and forefinger**, firmly press Chamber 1 until ampoule breaks.



- F. Gently shake test unit for a few seconds.



- G. If red-violet coloring was present following Accutest® IDenta Step 1-G (Heroin detection kit Cat No. ACS2000), and a purple or purple-brown color develops during Step 2-G, the presence of heroin street drug is confirmed. Slow color development indicates "Low Heroin".



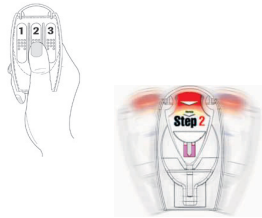
- H. If a red-violet color was present during Accutest® IDenta Step 1-J (Heroin detection kit Cat No. ACS2000) and a purple – brown color developed during Step 2 - G, the presence of Heroin is indicated.



Proceed to acid neutralization step – whether or not color appears.

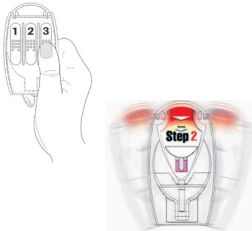
ACID NEUTRALIZATION:

- I. With **thumb and forefinger**, firmly press Chamber 2 until ampoule breaks. Gently shake test unit (for acid neutralization).



Wait **5 minutes** before proceeding.

- J. With **thumb and forefinger**, firmly press Chamber 3 until ampoule breaks. Gently shake test unit (for completion of acid neutralization).



Window of test unit will warm up this is a normal part of the acid neutralization process.

Note: Compare all colors in the window with the “ColorCheck” sticker.



Important: As a precaution, gloves should be worn when handling drug substances and using test units. Eye protection should also be worn. First Aid Measures: In case of contact, immediately flush eyes or skin for at least 15 minutes, while removing contaminated clothing and shoes. CALL A PHYSICIAN IMMEDIATELY. If ingested, CALL A PHYSICIAN IMMEDIATELY. Review appropriate Material Safety Data Sheet (MSDS) for toxicity and first aid information. Material Safety Data Sheets (MSDS) are available upon request at the following 24 hour phone #: (800) 424-9300 (North America), (703) 527-3887 (International). Accutest IDenta is a highly accurate screening test designed for on site testing of suspected illegal drugs. As with all field testing devices, this test is not meant to replace standard practices or procedures established or recommended by local, state or federal correctional or law enforcement agencies for the identification of suspicious substances and/or illegal drugs.

- H. If no color develops, use thumb and forefinger to break ampoule in Chamber 2.



- I. Gently shake test unit for a few seconds.



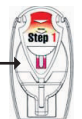
- J. If a red-violet color develops in the lower phase, the presence of Heroin is presumed. Confirm presence of Heroin with Accutest® IDenta Heroin Confirmation Kit Step 2. (Cat No. ACS2200).



- K. If no color develops, there is no Heroin (or other opiate) present. Confirmation is NOT required.



Note: Compare all colors in the window with the “ColorCheck” sticker.



Important: As a precaution, gloves should be worn when handling drug substances and using test units. Eye protection should also be worn. First Aid Measures: In case of contact, immediately flush eyes or skin for at least 15 minutes, while removing contaminated clothing and shoes. CALL A PHYSICIAN IMMEDIATELY. If ingested, CALL A PHYSICIAN IMMEDIATELY. Review appropriate Material Safety Data Sheet (MSDS) for toxicity and first aid information. Material Safety Data Sheets (MSDS) are available upon request at the following 24 hour phone #: (800) 424-9300 (North America), (703) 527-3887 (International). Accutest IDenta is a highly accurate screening test designed for on site testing of suspected illegal drugs. As with all field testing devices, this test is not meant to replace standard practices or procedures established or recommended by local, state or federal correctional or law enforcement agencies for the identification of suspicious substances and/or illegal drugs.