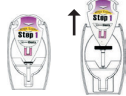


**Procedure Card for Accutest® IDenta  
MDMA (Ecstasy) Identification Field Test Kit Step 1 – Detection**  
(Catalog No. ACS4000)

Read this procedure card prior to use.  
**INSTRUCTIONS**

- A. Remove sampler from the top of the Accutest® IDenta Step 1 test unit.



- B. Slide rubber ring off sampler and discard.



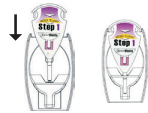
- C. Press sampler's adhesive tip onto suspected substance (powder), allowing some material to stick to tip.



If testing a tablet, twist sampler tip into tablet, allowing some of the substance to stick to tip.



- D. Return sampler to the test unit and press firmly to lock.



**Warning: Do not continue to the next step until sampler is completely locked into place.**

- E. With **thumb and forefinger**, firmly press Chamber 1 until ampoule breaks.



- F. Gently shake test unit for a few seconds.



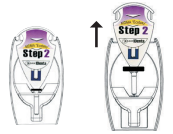
- If color develops instantly, no MDMA (Ecstasy) is present and confirmation is not required.
- If after 1 to 2 ½ minutes, a pale violet or violet color gradually develops, the presence of MDMA (Ecstasy) is indicated (note: color will darken with time).



**Procedure Card for Accutest® IDenta  
MDMA (Ecstasy) Confirmation Field Test Kit Step 2**  
(Catalog No. ACS4400)

Read this procedure card prior to use.  
**INSTRUCTIONS**

- A. Remove sampler from the top of the Accutest® IDenta Step 2 test unit.



- B. Slide rubber ring off sampler and discard.



- C. Press sampler's adhesive tip onto suspected substance (powder), allowing some material to stick to tip.



If testing a tablet, twist sampler tip into tablet, allowing some of the substance to stick to tip.



- D. Return sampler to the test unit press firmly to lock.



**Warning:**  
Do not continue to the next step until the sample is completely locked into place.

- E. With **thumb and forefinger**, firmly press Chamber 1 until ampoule breaks.



G. Proceed with Confirmation. This will require the use of Accutest® IDenta MDMA (Ecstasy) Confirmation Kit Step 2 - Catalog No. ACS4400.

Note: If no color develops at all after approximately 3 minutes, no MDMA is present. Do not proceed to confirmation.

Proceed to acid neutralization step – whether or not color appeared.

**ACID NEUTRALIZATION:**

H. With **thumb and forefinger**, firmly press Chamber 2 until ampoule breaks.



I. Shake test unit gently (for acid neutralization). Wait 5 minutes.



J. With **thumb and forefinger**, firmly press Chamber 3 until ampoule breaks.



K. Shake gently (for completion of acid neutralization). Window of test unit will warm up - this is a normal part of the acid neutralization process.



Note: Compare all colors in the window with the “ColorCheck” sticker. →



**Important:** As a precaution, gloves should be worn when handling drug substances and using test units. Eye protection should also be worn. First Aid Measures: In case of contact, immediately flush eyes or skin for at least 15 minutes, while removing contaminated clothing and shoes. CALL A PHYSICIAN IMMEDIATELY. If ingested, CALL A PHYSICIAN IMMEDIATELY. Review appropriate Material Safety Data Sheet (MSDS) for toxicity and first aid information. Material Safety Data Sheets (MSDS) are available upon request at the following 24 hour phone #: (800) 424-9300 (North America), (703) 527-3887 (International). Accutest IDenta is a highly accurate screening test designed for on site testing of suspected illegal drugs. As with all field testing devices, this test is not meant to replace standard practices or procedures established or recommended by local, state or federal correctional or law enforcement agencies for the identification of suspicious substances and/or illegal drugs.

F. Gently shake test unit for a few seconds.



G. With **thumb and forefinger**, firmly press Chamber 2 until ampoule breaks.



Do NOT agitate!

H. If a blue color develops, the presence of MDMA (Ecstasy) is confirmed.



I. If a blue color does NOT develop, the presence of Ecstasy analog (i.e. MDA) is confirmed.



Note: Compare all colors in the window with the “ColorCheck” sticker. →



**Important:** As a precaution, gloves should be worn when handling drug substances and using test units. Eye protection should also be worn. First Aid Measures: In case of contact, immediately flush eyes or skin for at least 15 minutes, while removing contaminated clothing and shoes. CALL A PHYSICIAN IMMEDIATELY. If ingested, CALL A PHYSICIAN IMMEDIATELY. Review appropriate Material Safety Data Sheet (MSDS) for toxicity and first aid information. Material Safety Data Sheets (MSDS) are available upon request at the following 24 hour phone #: (800) 424-9300 (North America), (703) 527-3887 (International). Accutest IDenta is a highly accurate screening test designed for on site testing of suspected illegal drugs. As with all field testing devices, this test is not meant to replace standard practices or procedures established or recommended by local, state or federal correctional or law enforcement agencies for the identification of suspicious substances and/or illegal drugs.